

United States Department of the Interior
National Park Service

National Register of Historic Places Registration Form

DRAFT

This form is for use in nominating or requesting determinations for individual properties and districts. See instructions in National Register Bulletin, *How to Complete the National Register of Historic Places Registration Form*. If any item does not apply to the property being documented, enter "N/A" for "not applicable." For functions, architectural classification, materials, and areas of significance, enter only categories and subcategories from the instructions. **Place additional certification comments, entries, and narrative items on continuation sheets if needed (NPS Form 10-900a).**

1. Name of Property

historic name Glacier County Courthouse
other names/site number 24GL1319

2. Location

street & number 512 East Main Street not for publication
city or town Cut Bank vicinity
state Montana code MT county Glacier code 035 zip code 59427

3. State/Federal Agency Certification

As the designated authority under the National Historic Preservation Act, as amended,

I hereby certify that this X nomination ___ request for determination of eligibility meets the documentation standards for registering properties in the National Register of Historic Places and meets the procedural and professional requirements set forth in 36 CFR Part 60.

In my opinion, the property X meets ___ does not meet the National Register Criteria. I recommend that this property be considered significant at the following level(s) of significance:

___ national ___ statewide X local

Signature of certifying official/Title Date

State or Federal agency/bureau or Tribal Government

In my opinion, the property ___ meets ___ does not meet the National Register criteria.

Signature of commenting official Date

Title State or Federal agency/bureau or Tribal Government

4. National Park Service Certification

I hereby certify that this property is:

___ entered in the National Register ___ determined eligible for the National Register

___ determined not eligible for the National Register ___ removed from the National Register

___ other (explain:) _____

Signature of the Keeper Date of Action

Glacier County Courthouse
Name of Property

DRAFT

Glacier County, MT
County and State

5. Classification

Ownership of Property
(Check as many boxes as apply.)

Category of Property
(Check only one box.)

Number of Resources within Property
(Do not include previously listed resources in the count.)

- private
- public - Local
- public - State
- public - Federal

- building(s)
- district
- site
- structure
- object

Contributing	Noncontributing	
1	1	buildings
		district
		site
		structure
		object
1	1	Total

Name of related multiple property listing
(Enter "N/A" if property is not part of a multiple property listing)

Number of contributing resources previously listed in the National Register

N/A

N/A

6. Function or Use

Historic Functions
(Enter categories from instructions.)

Current Functions
(Enter categories from instructions.)

GOVERNMENT/courthouse

GOVERNMENT/courthouse
GOVERNMENT/correctional facility

7. Description

Architectural Classification
(Enter categories from instructions.)

Materials
(Enter categories from instructions.)

MODERN MOVEMENT/PWA Modern

foundation: CONCRETE
walls: BRICK

roof: ASPHALT
other: TERRA COTTA

Glacier County Courthouse
Name of Property

DRAFT

Glacier County, MT
County and State

Narrative Description

(Describe the historic and current physical appearance of the property. Explain contributing and noncontributing resources if necessary. Begin with a **summary paragraph** that briefly describes the general characteristics of the property, such as its location, setting, size, and significant features.)

Summary Paragraph

Rising on a grassy lawn amid tall mature spruce trees and above Cut Bank's Main Street, the monumental Glacier County courthouse stands as a three-story, "T"-shaped, flat roofed, tan brick building on a poured concrete-wall foundation with a modern, irregularly-shaped, brick detention center addition across its rear (south) elevation. Designed by Angus McIver in 1938 and completed in November 1939, the courthouse artfully embodies the PWA Modern/Stripped Classical style that became increasingly influential by the late 1930s - a time when many architects experimented with abstracted classical motifs combined with a reduction in architectural ornament. The building's planes of Great Falls brick are nearly devoid of classical ornamentation, which is limited to the punctuated regular rhythm of tall, elongated bays, chamfered terra cotta panels at the entry surround, and fluted terra cotta panels dividing the window bays between floors. Encompassing nearly a full city block along Main Street, each of the exterior elevations is similar in design: with smooth walls pierced by elongated bays enclosing sets of windows. The building exhibits three stories, including a full daylight basement and two stories above. Historic photos reveal the sets of original nine-over-nine double-hung wood-frame window design throughout the building. These windows were replaced during the late 1970s or early 1980s with tripled, wood-frame, one-over-one, double-hung windows.

Narrative Description

The Glacier County Courthouse is located in the town of Cutbank in northwest Montana. Cutbank, a town of 3500 people, rests at the intersection of the Great Plains and the Rocky Mountains, immediately east of Cut Bank Creek and 25 miles south of the US/Canada border. Fifty miles to the west, the continental divide rises from the plains providing a striking view. Immediately to the west, just across Cut Bank Creek, is the Blackfeet Indian Reservation, and further west lies Glacier National Park; the Reservation and the Park comprise the majority of the county.

Historic Courthouse (1939, one contributing building)

North Elevation (façade)

A wide concrete sidewalk lined with tall spruce trees leads from Main Street to a series of concrete steps with wrought iron handrails that in turn lead to the courthouse's raised three-story, central entry bay. The central bay steps out from the center of the elevation, revealing a recessed two-story entry surrounded by chamfered terra cotta panels. The striking dark texture of the wooden double doors' cast-iron kickplates and decorative hardware contrasts with the light tones of the pale tan brick walls and gray terra cotta panels. This central bay is a half-story higher than the rest of the building, and holds the interior staircase, with a mezzanine landing within its second story. Though partially obscured by 1970s-era wooden storms on the exterior that give the appearance of one-over-one double-hungs, the mezzanine windows are original eighteen-light leaded sashes. The central sash is fixed, flanked by side-hinged casements with bronze hardware. Each of these windows features a stained glass pane centered in the upper nine lights. The terra cotta panels filling the space above the doors and below the windows are etched, reading "GLACIER COUNTY COURTHOUSE" with a row of six, small, five-pointed stars above and seven stars below the lettering. A stylized terra cotta eagle relief, wings outstretched, stands upon the entry's terra cotta surround, and above the eagle, centered high in the third-story level, wrought iron numbers read "1938".¹ There is a single large, wrought iron light fixture to either side of the doorway. Also on either side of the centered entry, the bay steps down and back. Within each of these flanks, a narrow, fluted, terra cotta-paneled channel runs from the steps to the roofline, punctuated by single, non-original, narrow, one-over-one double-hungs at the second and third story. Originally, these windows were wood-frame nine-over-nine double-hungs. (see blueprint detail)

The north elevation's west and east bays step down from the entry bay and feature symmetrical fenestration, with two evenly-spaced fluted, terra cotta-paneled channels that hold the window openings. The each opening at the second and third stories holds tripled one-over-one wood-frame double hung replacement windows with wooden storms. Each of these openings features a narrow terra cotta sill. The first story (daylight basement) paired windows are less high, featuring a

¹ Though the building displays the 1938 date above the entry, its completion and occupation date is 1939.

Glacier County Courthouse
Name of Property

DRAFT

Glacier County, MT
County and State

small single-light, single-hung sash below a fixed, one-light sash. For security, iron bars cover the first story openings. Also at the first story, concrete sills protrude slightly from the concrete-wall watertable that surrounds the entire building.

East (side) Elevation

The original courthouse building's east elevation features four bays, and additional modern detention center wings extend from the south end. The northernmost bay represents the protruding section of the north elevation's entry bay. Within it, a single narrow fluted terra cotta-paneled channel holds a single, one-over-one double-hung wood-framed replacement window at the second and third stories, and a single-hung one-over-one window at the first floor daylight basement level. The east elevation's prominent central bay contains three similar evenly-spaced channels and windows, with paired windows at center and tripled windows to the north and south sides. The south bays represent the courthouse's south wing, the base of the "T"-shaped floorplan. The north side of this wing rises to nearly three and a half stories, accommodating the one-and-a-half-story third-floor courtroom. The wing features slightly lighter brick. The wing's large north bay contains two soldier-coursed brick channels rather than terra cotta. There is a pair of one-over-one double-hung windows visible at the north side of the second story. The modern detention center addition obscures the windows at the south side. There are no windows at the first story, but at the third story, tall pairs of replacement double-hungs fill the large openings below a very large one-light, fixed transom. These vinyl-clad windows do not match the rest of the historic courthouse's fenestration. The top half-story extends slightly to the north within the main building's three-story bay. This stepped-back half-wall contains two, wide one-light fixed windows toward its south end. These windows are barely visible from the exterior, but provide light the courtroom and third story corridor within. At the southernmost bay of the courthouse wing, a single terra cotta-paneled channel rises to the third story level above the one-story detention center addition. There, a single one-over-one double-hung replacement window fills the only opening.

South (rear) Elevation

The 2009 detention center addition obscures much of the historic courthouse's south elevation. The east wing's south elevation is intact, revealing two evenly-spaced terra cotta window channels with paired wood-frame replacement windows at the second and third stories. The first floor paired single-hung daylight basement windows display the design identical to those at the east and north elevations. There are no openings at the upper stories visible above the addition at the center bay's middle and east sides. The central bay's west side south elevation reveals two window channels, the easternmost containing soldiered brick panels between the roof and paired wood-frame, double-hung windows at the second and third stories. The narrower westernmost channel features fluted terra cotta panels above and below the second and third story single double-hung windows. The first floor windows are barred wood-framed, single-hungs. The west wing's historic south elevation rises above the one-story detention center at its second and third story. It contains two terra cotta channels, each with a pair of wood-frame, double-hung replacement windows at each story.

West (side) Elevation

The west elevation mirrors the east, with four bays, and additional modern detention center wings extend from the south end. The northernmost bay represents the protruding section of the north elevation's entry bay. Within it, a single narrow fluted terra cotta-paneled channel holds a single, one-over-one double-hung wood-framed replacement window at the second and third stories, and a single-hung one-over-one window at the first floor daylight basement level. The prominent central bay contains three evenly-spaced terra cotta paneled window channels, with paired windows at center and tripled windows to the north and south sides. The south bays represent the courthouse's south wing, the base of the "T"-shaped floorplan. The north side of this wing rises to nearly three and a half stories, accommodating the one-and-one-half-story third-floor courtroom. The wing features slightly lighter brick. The detention center addition obscures the wing's north bay at the first story. The second and third stories feature two soldier-coursed brick window channels. The second story displays pairs of one-over-one double-hung windows wood-frame windows. Above, at the third story, tall pairs of replacement double-hungs fill the large openings below a very large one-light, fixed transom. These vinyl-clad windows do not match the rest of the historic courthouse's fenestration. The top half-story extends slightly to the north within the main building's three-story bay. This stepped-back half-wall contains two, wide fixed windows toward its south end. These windows are barely visible from the exterior, but provide light the courtroom and third floor corridor within. At the southernmost bay of the courthouse wing, a centered window channel features terra cotta panels above and below the third story single double-hung window. Soldiered brick fills the opening and lower panel at the second story.

Interior

The three stories of the historic courthouse retain many of the original materials, including asphalt tile beneath carpeting in the offices, terrazzo floors and travertine baseboards in the corridors, and varnished red oak trim throughout. The doors all feature original bronze hardware and one-light functioning transoms. The third-floor courtrooms witnessed remodeling in the late twentieth century, but steel light fixtures remain. Modern paneling and acoustic tiles cover some walls and ceilings,

Glacier County Courthouse
Name of Property

DRAFT

Glacier County, MT
County and State

respectively, but original plaster and pink travertine marble from Gardiner, Montana, likely remains underneath. The railings are especially intriguing, with wrought iron balusters, some with prickly pear detailing, and chrome handrails.

Detention Center Addition

The one-story, tan brick, modern (2009) detention center addition extends from the south and east sides of the historic portion, and fills the ell at the west elevation's center and south bays. The irregularly-shaped addition has a concrete wall foundation.

South elevation

The detention center's entrance is located at the south elevation of the one-story extension within the ell. It features a recessed single door entry at the west side, and a tiled channel containing multiple gloss blocks within the window opening to the off-center to the west.

West elevation

The addition's west elevation features four bays. The northernmost bay fills the ell at the historic building's south wing, and features three tiled channels, one at the north side, one off-center to the south, and another at the south end. The north and center channels each contain a pair of metal-clad one-over-one double-hungs. A vertically-oriented, louvered panel fills the opening in the southernmost channel. The next bay to the south is one-and-one-half stories, and extends from the middle of the historic courthouse's south central bay. It features a single metal entry door at its north side. The next bay to the south steps down and back to a single story, and features a covered flat-roofed brick entryway at its north end. The entry itself is a metal framed, one-light door surrounded by single metal-framed sidelights and a three-light transom. The west elevation's southernmost bay contains a metal pedestrian door to the north side, and two horizontal single-light, concrete-silled windows across to the south; the bay then angles to the southwest to accommodate a large metal overhead door.

Southwest and Southeast Elevations

The detention center's southwest elevation has no window or door openings. Proceeding east, the addition angles to the northeast, and this southeast elevation faces a concrete loading ramp. The southeast elevation is divided into three bays, a low, one-story northeast bay that features a single, one-light, concrete-silled window, a one-and-a-half-story central bay that contains two pairs of steel-framed windows, and the one-story southwest bay that contains a single, large, metal overhead door. The steel windows feature a single fixed light to the east side and a two-light window to the southwest. The west windows' single lower sashes are awnings.

East elevation

At the east elevation, the detention center steps out in three bays from the historic courthouse. At the bays' east elevation, openings are limited to a metal, narrow, overhead door in the north side of its northernmost bay, and a single, metal pedestrian door off-center to the north. The east elevation's south bay contains four low, horizontal, one-light, recessed windows with concrete sills.

North elevation

The detention center's east side north elevation contains two, tall, single, vinyl-clad one-light fixed windows.

Garage (construction date unknown, one noncontributing building)

A concrete-block, front-gabled, two-bay garage stands south behind the courthouse and detention center. Modern metal roofing covers the roof. Horizontal wood siding fills the gable ends. The garage faces north, with two, large, overhead door openings at the façade. The garage's west elevation contains a metal pedestrian door to the north and two modern vinyl-clad one-over-one double-hung windows to the south. The east and south elevations contain no fenestration.

Integrity

The Glacier County Courthouse retains its integrity of location, setting, workmanship, feeling and association. Replacement of nearly all of the windows during the late twentieth century diminished its integrity of design and materials, as did the 2009 detention center addition to the south end of the building. Despite these changes, however, the building is a strong representation of local development and government through the mid-twentieth century, and displays many of the design elements associated with PWA Modern architecture. These associations remain clear, and the historic building's significance transcends the alterations to its exterior.

Glacier County Courthouse
Name of Property

DRAFT

Glacier County, MT
County and State

8. Statement of Significance

Applicable National Register Criteria

(Mark "x" in one or more boxes for the criteria qualifying the property for National Register listing.)

- A Property is associated with events that have made a significant contribution to the broad patterns of our history.
- B Property is associated with the lives of persons significant in our past.
- C Property embodies the distinctive characteristics of a type, period, or method of construction or represents the work of a master, or possesses high artistic values, or represents a significant and distinguishable entity whose components lack individual distinction.
- D Property has yielded, or is likely to yield, information important in prehistory or history.

Areas of Significance

(Enter categories from instructions.)

POLITICS/GOVERNMENT

COMMUNITY PLANNING AND DEVELOPMENT

ARCHITECTURE

Period of Significance

1939-1960

Significant Dates

1939

Significant Person

(Complete only if Criterion B is marked above.)

Cultural Affiliation

Architect/Builder

Angus McIver, Architect

Criteria Considerations

(Mark "x" in all the boxes that apply.)

Property is:

- A Owned by a religious institution or used for religious purposes.
- B removed from its original location.
- C a birthplace or grave.
- D a cemetery.
- E a reconstructed building, object, or structure.
- F a commemorative property.
- G less than 50 years old or achieving significance within the past 50 years.

Period of Significance (justification)

The period of significance, 1939-1960, begins with the completion of the courthouse construction and continues through the community's period of growth. By 1960, the oil boom and associated enterprises waned, and the economy shifted to smaller-scale support services.

Criteria Considerations (explanation, if necessary)

N/A

Glacier County Courthouse
Name of Property

DRAFT

Glacier County, MT
County and State

Statement of Significance Summary Paragraph (Provide a summary paragraph that includes level of significance and applicable criteria.)

The Glacier County Courthouse in Cut Bank, Montana stands as a significant representation of the development of the locality, both politically and economically. Designed in 1938 and completed in 1939, it was built during a period of unprecedented prosperity in Cut Bank and the surrounding area. At that time, while most of Montana and the nation experienced severe economic hardship, the Cut Bank area was in the midst of an oil boom that brought jobs, economic stability, and optimism to the area. The building represents the city's confidence in their future, and hopeful pride in becoming the "Oil Capital of the World." The building served the community since its construction as the center of political activity for the county, and housed the county's political officers, staff, and court. For these reasons, it is eligible for listing in the National Register of Historic Places under Criterion A.

The building gains additional significance under Criterion C for its associations with Angus McIver, a prominent architect based in Great Falls during the mid and late twentieth century.² His Glacier County Courthouse is an excellent local example of his work, and artfully embodies the Art Modern style that was becoming increasingly influential by the late 1930s - a time when many architects experimented with abstracted classical motifs combined with a reduction in architectural ornament. The building's planes of Great Falls brick are nearly devoid of classical ornamentation, which is limited to the punctuated regular rhythm of tall, elongated bays, chamfered terra cotta panels at the entry surround, and fluted terra cotta panels dividing the window bays between floors.

Narrative Statement of Significance (Provide at least one paragraph for each area of significance.)

Historic courthouses are more than architecturally grand buildings and old government offices. They're physical, tangible links to community and state heritage. Courthouses were the first permanent structures in many communities, and main streets and business districts grew and prospered in their shadows. Marriages, trials, elections, parades, festivals, campaign rallies and community celebrations are just some of the events linked to courthouse squares.³

One of the most important, but least remarked upon, of America's architectural legacies can be found in thousands of county seats across the country -- the county courthouse. Designed and built with pride, they often became the community's landmark structure.

As Herbert Johnson & Ralph Andrist explain in their book, *Historic Courthouses of New York State*, "Because American local governing bodies have traditionally held their legislative and executive sessions in the county courthouse, and the activities of officials such as sheriffs, tax assessors, county clerks, and registrars of wills and deeds have also centered in the courthouse or its neighborhood, the county courthouse has been the focal point of local political and governmental life."⁴

The authors further observe that "Courthouse architecture reflected the esteem in which law and local government were held. ... Courtrooms were graced with large windows and lofty ceilings, and those on the second floor were often reached by long and impressive staircases."⁵

The county courthouse often centered the community, not just figuratively, but literally by either occupying the main square or fronting on it (see, for example, the Mifflin County and Tioga County Courthouses). As Richard V. Francaviglia notes in *Main Street Revisited: Time, Space, and Image Building in Small-Town America*, "In central county seats, roads often converged from at least four directions on the county courthouse. Very often a town speculator would donate a central block of property for the courthouse, and, in many centrally located towns, the business district grew around the courthouse. ... Just as zoning today can affect town morphology, so too could speculation. In many county seats, commercial properties were deliberately located facing the courthouse square, a recognition that the courthouse could serve as a magnet to commercial enterprises."

² McIver also designed the NR-listed Montana Veterans and Pioneers Memorial Building, which houses the Montana Historical Society in Helena (1953).

³ Texas Historical Commission, Texas Historic Courthouse Preservation Program, <http://www.thc.state.tx.us/faqs/faqch.html>.

⁴ Herbert Johnson and Ralph Andrist, *Historic Courthouses of New York State: 18th and 19th Century Halls of Justice across the Empire State*, (New York: Columbia University Press, 1977),p.

⁵ Ibid

Glacier County Courthouse
Name of Property

DRAFT

Glacier County, MT
County and State

During the late 19th and early 20th century, Montana was organized into 56 counties, each with its own county seat and courthouse. The buildings span a spectrum, from the simple, wooden false-fronted Daniels County courthouse to grand multi-story granite and sandstone Revival style buildings, such as the Teton County Courthouse. These courthouses have served for decades as important landmarks and the center of local governance. The Glacier County Courthouse is unquestionably one of the most impressive monuments to local government in the state of Montana.

Early History of the Cut Bank Area⁶

Cut Bank is located within lands historically associated with the Blackfeet. The Blackfoot Confederacy consists of four different tribes, the Pikuni/Peigan, North Peigan Pikuni, Blood/Kainai, and Blackfoot/Siksika. Members of the Blackfoot Confederation presently live in Montana, the United States and Alberta, Canada. Before the arrival of non-Indians from the East, the tribes long controlled a vast territory.

Our traditional territory extended from Ponokasisahta (Elk River, now called the North Saskatchewan River) south to Otahtoitahtayi (the Yellowstone River). We lived along the eastern slopes of the Rocky Mountains and eastward beyond Omahskispatsikoyii (the Great Sand Hills in what is now called Saskatchewan). It is an immense land with some of the richest natural resources in the world.

We knew every detail of this land. Our people traveled constantly throughout it, and their trails were well marked across the grasslands. They lived by hunting game and collecting plants. By moving camp frequently, they were able to avoid depleting the resources in any one area. Our people knew the places where different plants grew and where game was plentiful. Their lives were nomadic, but their movements were not aimless; they always traveled with a purpose.⁷

As non-Indian trappers and traders began to infiltrate their territory, the Blackfeet way of life changed significantly. By the mid-1800s, decimation of the buffalo, smallpox, and other scourges took their toll on the tribes' ability to retain their traditional lifeways and territory. In 1855, the first of a series of "treaties" between the U.S. government and the tribes resulted in the eventual establishment of the Blackfeet Reservation. Subsequent agreements greatly reduced the Blackfeet-controlled lands.

The buffalo had disappeared by 1880. A drought and a worldwide depression made it hard for us to be successful farmers. We were forced to rely on government rations for survival. This increased our dependency on the kinnoona (Indian Agent). It was another blow to our morale.⁸

Great Northern Railroad Arrives⁹

In the autumn of 1890, Great Northern Railroad crews reached the site of present day Cut Bank. While construction crews stopped to construct the wooden trestle over Cut Bank Creek, a small temporary railroad construction camp emerged. The Great Northern soon established a station at Cut Bank, located on the west side of the trestle. A small settlement grew around the station, which was nothing more than a box car converted into a depot. In the depot, a telegrapher manned the telegraph over which he copied train orders and gave instructions to each train. During this period, stations were located every five to ten miles apart. On December 14, 1892, a post office, located in the salt box style section worker's house, was established with John K. Stauffer as postmaster. By 1894-1895, the town boasted a general store operated by G.H. Kurdvek. During these years, Cut Bank's population was 26, with most of the people except for the railroad workers living on nearby sheep and cattle ranches.

By the summer of 1900, the Great Northern employed 250 men at Cut Bank working on track improvements, working in the quarry, and building a new steel bridge to replace the original wooden structure. Rumors circulated the railroad planned on moving the roundhouse and division point from nearby Blackfoot to Cut Bank and expand the facility. Division points were located every 100 miles to keep properly maintain the steam engines. Businessmen began locating in Cut

⁶ Roy Nolkamper, Bob Jacoby, Dennis Seglem, and Kate Hampton, "Cut Bank Municipal Airport and Army Air Force Base National Register of Historic Places Nomination Form," June 2007. On file at the Montana State Historic Preservation Office, Helena.

⁷ "Our Traditional Territory," Glenbow Museum website, http://www.glenbow.org/blackfoot/EN/html/how_we_lived_with_the_land.htm.

⁸ Ibid.

⁹ Nolkamper, et. al., "Cut Bank Municipal Airport and Army Air Force Base National Register of Historic Places Nomination Form," June 2007. On file at the Montana State Historic Preservation Office, Helena.

Glacier County Courthouse
Name of Property

DRAFT

Glacier County, MT
County and State

Bank to serve the temporary workforce hoping the rumor would become reality. The August 23 edition of the *Shelby News* announced the completion of the bridge and that engine 522 with 25 cars of dirt was the first train to cross the new bridge. The paper also announced that:

parties in from Cut Bank state that the Great Northern railway have a large force of men at work at that point grading side tracks preparing the ground for the erection of a roundhouse, etc., and that before many months end, the division will be changed from Blackfoot to Cut Bank. If this is true, and we have no reason to doubt it, Cut Bank will be one of the best little towns in Northern Montana.¹⁰

The Great Northern finished the 32-stall roundhouse, coal chute, hotel, and other facilities by mid to late December 1900 and Cut Bank's population grew to about 300. Two years later in February 1902, Choteau's *Montanian* described that Cut Bank as:

quite a nice little town has sprung up there, and today, although scarcely two years old, it boasts of two hotels, one run under the management of Archie McDonald, and the other conducted by the Great Northern Railway for the convenience of its employees; two well-conducted merchandise establishments –the P. P. Lee Mercantile Company and the Cut Bank Mercantile Company owned by Halverson and Titus; three saloons- the "Owl", run by Philip Gilboe, the "Maverick" owned by George T. Brown, and John F. Thompson's place, a livery stable owned by A. E. Allison; a barbershop and bathroom run by O. E. Crowley. George W. Walker, one of the Great Northern Railway Company's operators, is the justice of the peace and Mrs. Walker is postmistress.¹¹

Cut Bank Expands

Besides being a railroad community, Cut Bank served as a supply point for open range cattle and sheep ranches such as the Circle, DHS, Narrow Gauge and F outfits. Some of the sheep ranchers included Potter, Miller, MacRae, and the F Company. Each June for about a month, a shearing plant with 20 shearing machines operated in Cut Bank. In 1904, between 40 and 50 thousand sheep were shorn at the Cut Bank plant. Just a mile east of Cut Bank was Baltic, a shipping point for cattle and sheep. Cattle outfits would ship anywhere from a carload to a trainload of beef at a time from the Baltic stockyards. In the fall, these cattle outfits would conduct their annual roundups.

By 1910, Cut Bank's population increased to 518. The opening of the area around Cut Bank in 1909 to homesteading marked a period of transition. Fenced homesteads and ranches began to replace the open range cattle and sheep ranching industries common in the area. In addition to the influx of people from the Midwest, especially Wisconsin and Minnesota, homesteading brought farm families with northern European backgrounds including German and Scandinavian. These homesteaders hoped to create prosperous farms from the arid prairie. Despite the dry conditions, they saw advantages in free land already free of trees. Homesteaders depended upon the merchants of Cut Bank to supply their farms with lumber, household goods and food and in return the homesteaders shipped their farm produce from Cut Bank. The economic prosperity and growth of the area spurred the construction of many fine masonry commercial buildings during these years.

Walking the streets of Cut Bank in 1910 was a multi-cultural experience. Because agriculture proved successful in the area, the railroad found a shortage of workers to staff its division point. To solve the problem, the Great Northern encouraged immigrant labor resulting in a diversity of languages. Besides English, languages spoken included Japanese, Bulgarian and Italian. Several other languages were spoken to a lesser degree. Agriculturally however, the prosperous times didn't last. Beginning in 1917, area farm families struggled through an agricultural depression, long term drought and drop in grain prices. Many farmers lost their farms, were either unable to afford taxes, or repay loans. Others kept their farms through supplemental incomes such as railroad jobs.

Through the years, the Great Northern gradually expanded and improved its railroad division point. By 1920, Cut Bank's population grew to 1,180. On May 4, 1928, however, the Cut Bank *Pioneer Press* announced:

Whistle (at the roundhouse) will toot for the last time tomorrow (Saturday) promptly at 12:00. Preparations are going steadily ahead for the abandonment of the local terminal. Track is being taken up rapidly now.

¹⁰ *Shelby News*, August 23, 1900.

¹¹ *Montanian*, February 1902, Choteau, MT.

Glacier County Courthouse
Name of Property

DRAFT

Glacier County, MT
County and State

The "Beanery" (The GN Hotel) one of our ancient shrines, closed Wednesday and the management distributed dozens of delectable pies and other perishable things to patrons.¹²

Soon after this announcement, Cut Bank's population fell by 300 to 874 and many farmers lost their supplemental income earned from railroad employment. These were challenging times for the residents of Cut Bank.

However, prosperity for Cut Bank loomed on the horizon. In the early 1920s, the oil and gas boom began north of Shelby, Montana, in the Kevin/Sunburst/Oilmont area. By 1928, oil exploration moved west toward Cut Bank resulting in actual production beginning the summer of 1931. The residents of Cut Bank quickly realized the positive economic implications and rejoiced with a community Gas Day celebration.

While most of America suffered through the Great Depression, Cut Bank grew and prospered during the 1930s. At first, Cut Bank was an oil boom town. Many oil workers came north from the Oklahoma and Texas oilfields to work for the small wildcat companies operating in and around Cut Bank. When they arrived, however, they found housing shortages. To accommodate the influx of workers, houses were built or moved in from the surrounding area. Oil camps, like Santa Rita, Adams, and Tipville, sprang up around Cut Bank. Local farmers found work in the oilfields, supplementing their farm incomes.

During the 1930s, the population of Cut Bank rose from 847 to 2,509 in 1940. During the late 1930s and early 1940s, larger oil companies began buying out smaller ones. These companies began to invest in Cut Bank, building permanent facilities and bringing stable employment. Cut Bank advertised itself as the "Oil Capital of Montana."

Through the late 1930s and early 1940s, many homes were built to house the incoming population. Cut Bank strived to build prestigious new public buildings to reflect its new preeminence as an "oil city." The city tried to convince the Great Northern Railroad to build a new railroad station to emulate the city's prosperity. The GN however, struggling through the great depression, objected. Cut Bank settled with a railroad remodeling and modernizing of the old Cut Bank station. As Cut Bank continued to prosper, local entrepreneurs looked for ways to improve the community's economic status; one such way was to construct a new county courthouse.

A New Courthouse for Glacier County

Choteau County, one of the original Montana counties, encompassed a large area including the future location of Cut Bank. Due to the large size of these counties, it was inevitable that divisions occurred, creating new counties from the existing counties. In 1893, Teton County formed from a portion of the larger Choteau County. Continuing the trend of creating new counties from existing counties, the 1919 state legislature further divided Teton County resulting in the creation of Glacier County. Soon after the creation of the county, the fight over the location of the county seat ensued; Browning argued its location near the center of the county, it being the oldest townsite in the county, and it serving as the Blackfeet Agency qualified it for the honor, while Cut Bank stated its merits included being the oldest incorporated town in the county, and that it was the taxpaying center of the county. After a contentious election, Cut Bank was named as the county seat¹³.

As Cut Bank struggled with the downturn in the agricultural market, little public funding was available to build a courthouse. The lack of funding necessitated located in the county offices in the two-story city hall/fire department building on Halvorson Street on the west end of town. As the county's population increased through the 1930s, the size of the government grew commensurately, eventually squeezing out both the fire department and the city offices from the building. By 1937, it was obvious that the county staff and court required additional space, and a building befitting the community's rise to prominence in the oil industry.

The county began the petition process to secure bonds to finance construction, and in December 1937, the county commissioners inquired about Public Works Administration (PWA) grant funds for the ambitious project.¹⁴ To this end, in

¹² *Pioneer Press*, May 4, 1928, Cut Bank, MT.

¹³ *History of Glacier County, Montana*. Glacier County Historical Society (Dallas, Taylor Publishing Company, 1984), 4-5.

¹⁴ *Pioneer Press*, June 24, 1938, Cut Bank, MT. Created by the National Industrial Recovery Act on June 16, 1933, the Public Works Administration (PWA) budgeted several billion dollars to be spent on the construction of public works as a means of providing employment, stabilizing purchasing power, improving public welfare, and contributing to a revival of American industry. Simply put, it was designed to spend "big bucks on big projects." <http://www.nps.gov/archive/elro/glossary/pwa.htm>.

Glacier County Courthouse
Name of Property

DRAFT

Glacier County, MT
County and State

May 1938, they submitted the preliminary questionnaires. On July 15, the Pioneer Press reported the PWA approved the application and would provide nearly half of the construction costs. Two days later, 70 percent of county voters voted in favor of the bond to complete the building, and selected the site at the 500 block of East Main Street.¹⁵ The PWA provided \$45,000, and the bond sale provided an additional \$65,000.

Moving quickly, Great Falls Architect Angus McIver submitted his drawing in October of 1938, and the foundation was completed by December 23 that same year. On March 24, 1938, the county received the first installment of PWA funds, allowing the first floor slab to be poured.¹⁶ As work progressed on the courthouse, the *Pioneer Press* reported other construction projects going in the city, including a bowling alley and new residences.¹⁷

Finally, in November 1939, the county opened the building to the public. The local newspaper reported:

Passersby have for weeks been admiring the outside appearance of Glacier County's new courthouse, built in a distinctively modern style of light colored Great Falls brick with terra cotta trim. The building is a three-story structure...It has a structural frame of reinforced concrete, with combination tile and concrete floors, making the building fire resisting throughout. The roof is pitch and gravel.

Those who visit the building on "open house" day and later will see attractively appointed offices, and harmonizing floors and walls.

All finished room floors throughout the building are asphalt tile, marbled as to pattern. Corridor floors are of terrazzo, laid in patterns and using brass dividing strips. Woodwork is of red oak and corridors are wainscoted with Montana travertine marble quarried from Gardner, Montana. Stair railings are of wrought iron and chrome-plated steel...

...Three decorative window panels...have brought forth much favorable complement from persons who have already visited the courthouse. These are of stained glass and depict the three major industries of Glacier County – grazing, farming, and oil.¹⁸

The courthouse soon became operational and served as the political hub for the county. The county commissioners, clerk and recorder, tax assessors, and court offices all continue to be housed in the facility, in addition to other county programs. Cut Bank, due to its proximity to the Kevin-Sunburst oilfields, endured the Great Depression with more prosperity than other communities; it continued to thrive as a railroad, oil field support, agricultural, and commercial center in the late 1940s through the 1950s. Increased demand for petroleum products across the nation fueled the oil production economy in north central Montana immediately after World War II. This, together with a general trend in greater agricultural production through the mid-1950s resulted in a post-war economic and population "boom."

However, after 1951, the state's oil industry shifted from the north central fields to eastern Montana's Williston Basin and Powder River area fields, and Billings' refining center. By the late 1950s, growth subsided substantially. Over the subsequent decades, the courthouse continued to serve as a political center. It is a great source of pride to the community – as an architectural landmark and a reminder of Cut Bank's ambitions to be the "Oil Capital of the World."

¹⁵ *Pioneer Press*, July 22, 1938, Cut Bank, MT.

¹⁶ *Pioneer Press*, April 14, 1939, Cut Bank, MT.

¹⁷ *Pioneer Press*, April 14, 1939, Cut Bank, MT.

¹⁸ *Pioneer Press*, November 11, 1939, Cut Bank, MT.

Glacier County Courthouse
Name of Property

DRAFT

Glacier County, MT
County and State

The building, as constructed in 1939, functions admirably and continues to serve the 13,297 people of Glacier County¹⁹. However, an increase in methamphetamine-related crime in the mid-1990s resulted in a spike in arrests and by 1996, it became clear that the “old jail” at 221 West Main Street, behind the city offices, was inadequate. That year, and three more times over the next decade, the commissioners encouraged county voters to support a bond to construct a new jail. The bond passed in 2006, and resulted in the construction of the detention center, completed in 2009, off the south elevation of the courthouse.

Architectural significance

The PWA Modern style, also called “Stripped Classical,” was a term coined by architectural historian David Gebhard to describe the mostly civic and public architecture that characterized the Depression years. The style is seen in commercial and industrial buildings as well, however, mostly constructed from 1928 to 1941, but also found through the early 1950s. The style is characterized as follows: “These buildings were fundamentally classical and formal, with just enough Moderne detailing injected to convey a contemporary feeling as well as the traditional authority of the Classical.”²⁰ The style is characterized by a formal symmetry, often with hierarchical massing, limited decorative details, and an austere use of fine materials.

Character-defining features that may occur on a PWA Modern building include: symmetrical, cubic massing with a hierarchal form, flat roofs and parapets, formal entries, emphasized by wide surrounds or vertical towers, symmetrical fenestration, limited use of horizontal or vertical decorative banding to accentuate building features, use of fine cladding materials such as terra cotta to emphasize important features, smooth surfaces on the body of the building, sometimes accented by pilasters or bas relief sculpture.

Architectural Historian Carroll Van West describes the style:

The design inspiration for PWA Modern style came from several sources, including the art deco and Art Moderne movements of the late 1920s and early 1930s and the patriotic iconography of New Deal agencies such as the National Recovery Administration. By mixing concrete, steel, local building materials, patriotic imagery, classical motifs, and the forms and details of modern architecture, PWA Modern blended the old and new so that buildings were visually modern yet still evoked the past.²¹

Angus McIver’s design for the Glacier County Courthouse embodies the principles of PWA Modern. Built predominantly of local materials – including Great Falls brick, its imposing entrance, channeled windows, and restrained classism result in it serving as an excellent local representation of the style.

Angus Vaughn McIver

Angus Vaughn McIver has the distinction of being one of only two Montana architects elected to the status of “fellow” in the AIA. McIver graduated from the Great Falls High School and the University of Michigan. Upon graduation in 1915, he opened offices in Great Falls in partnership with two other young men, Chandler Cohagen and W.V. Marshall. This partnership dissolved in 1917 when all three entered the armed services. “Mac” was a first lieutenant attached to the 109th Engineers 34th Division and served in England and on the continent. Out of service in 1919, McIver returned to Montana. He again formed a partnership with Cohagen, and opened an office in Billings. Subsequently a branch office was formed in Great Falls, with McIver in charge. The partnership dissolved in 1937. Some years later the firm name became McIver and Associates, but was changed again shortly thereafter when William Hess and Knute Haugsjaa entered the firm. Throughout his 40 year career in Montana, McIver was innovative and kept up with design trends. His work spans from Neoclassical to Beaux Arts to International styles.

¹⁹ Population as of 2008. US Census Bureau, updated December 12, 2011. Found at: http://www.google.com/publicdata/explore?ds=kf7tgg1uo9ude_&met_y=population&idim=county:30035&dl=en&hl=en&q=population+f+glacier+county,+mt.

²⁰ David Gebhard, Eric Sandweiss, and Robert Winter, *The Guide to Architecture in San Francisco and Northern California*, Revised edition, (Salt Lake City: Gibbs-Smith Publisher, 1985), 578.

²¹ Carroll Van West, “Depression Architecture,” in *Encyclopedia of the Great Plains*, David J. Wishart, ed., (Lincoln: University of Nebraska Press, 2004), p. 76.

Glacier County Courthouse
Name of Property

DRAFT

Glacier County, MT
County and State

9. Major Bibliographical References

Bibliography (Cite the books, articles, and other sources used in preparing this form.)

Gebhard, David, Sandweiss, Eric, and Robert Winter. *The Guide to Architecture in San Francisco and Northern California*. Revised edition. Salt Lake City: Gibbs-Smith Publisher, 1985.

Montanian, February 1902, Choteau, MT.

National Park Service, "Eleanor Roosevelt Historic Site, Teaching Eleanor Roosevelt, Glossary: Public Works Administration," <http://www.nps.gov/archive/elro/glossary/pwa.htm>.

Nolkamper, Roy; Jacoby, Bob; Seglem, Dennis; and Hampton, Kate. "Cut Bank Municipal Airport and Army Air Force Base National Register of Historic Places Nomination Form," June, 2007. On file at the Montana State Historic Preservation Office, Helena.

Pioneer Press, 1937-1939, Cut Bank, MT.

Shelby News, August 23, 1900.

Van West, Carroll. Depression Architecture, in *Encyclopedia of the Great Plains*, David J. Wishart, ed., Lincoln:University of Nebraska Press, 2004.

Wishart, David J., ed. *Encyclopedia of the Great Plains*. Lincoln: University of Nebraska Press, 2004.

Previous documentation on file (NPS):

- preliminary determination of individual listing (36 CFR 67 has been requested)
- previously listed in the National Register
- previously determined eligible by the National Register
- designated a National Historic Landmark
- recorded by Historic American Buildings Survey # _____
- recorded by Historic American Engineering Record # _____
- recorded by Historic American Landscape Survey # _____

Primary location of additional data:

- State Historic Preservation Office
 - Other State agency
 - Federal agency
 - Local government
 - University
 - Other
- Name of repository: _____

Historic Resources Survey Number (if assigned): _____

10. Geographical Data

Acreage of Property 2.273

(Do not include previously listed resource acreage.)

Glacier County Courthouse
Name of Property

DRAFT

Glacier County, MT
County and State

UTM References

(Place additional UTM references on a continuation sheet.)

NAD27

1 12 402330 5387221
Zone Easting Northing

3 _____
Zone Easting Northing

2 _____
Zone Easting Northing

4 _____
Zone Easting Northing

Verbal Boundary Description (Describe the boundaries of the property.)

The Glacier County Courthouse occupies lots 1-6, parts of lots 7 and 10 and lots 11-15 in Block 21 of the Cut Bank Original Townsite. It is located in Township 33N Range 6W, SESWNE Section 12.

Boundary Justification (Explain why the boundaries were selected.)

The boundary includes the building that has historically been known as the Glacier County Courthouse, the Detention Center Addition, the garage and the assoc grounds, all owned by Glacier County.

11. Form Prepared By

name/title Kate Hampton and Christine Brown
organization CW Brown Consulting date 12/15/2011
street & number 423 5th Ave telephone (406) 459-6478
city or town Helena state MT zip code 59601
e-mail _____

Additional Documentation

Submit the following items with the completed form:

- **Maps:** A **USGS map** (7.5 or 15 minute series) indicating the property's location. A **Sketch map** for historic districts and properties having large acreage or numerous resources. Key all photographs to this map.
- **Continuation Sheets**
- **Additional items:** (Check with the SHPO or FPO for any additional items.)

Photographs:

Submit clear and descriptive photographs. The size of each image must be 1600x1200 pixels at 300 ppi (pixels per inch) or larger. Key all photographs to the sketch map.

Name of Property:

City or Vicinity:

County:

State:

Photographer:

Date Photographed:

Description of Photograph(s) and number:

1 of ____.

Please See Continuation Sheets

Glacier County Courthouse
Name of Property

DRAFT

Glacier County, MT
County and State

Property Owner:

(Complete this item at the request of the SHPO or FPO.)

name Glacier County
street & number 512 East Main telephone _____
city or town Cut Bank state MT zip code 59427

Paperwork Reduction Act Statement: This information is being collected for applications to the National Register of Historic Places to nominate properties for listing or determine eligibility for listing, to list properties, and to amend existing listings. Response to this request is required to obtain a benefit in accordance with the National Historic Preservation Act, as amended (16 U.S.C.460 et seq.).

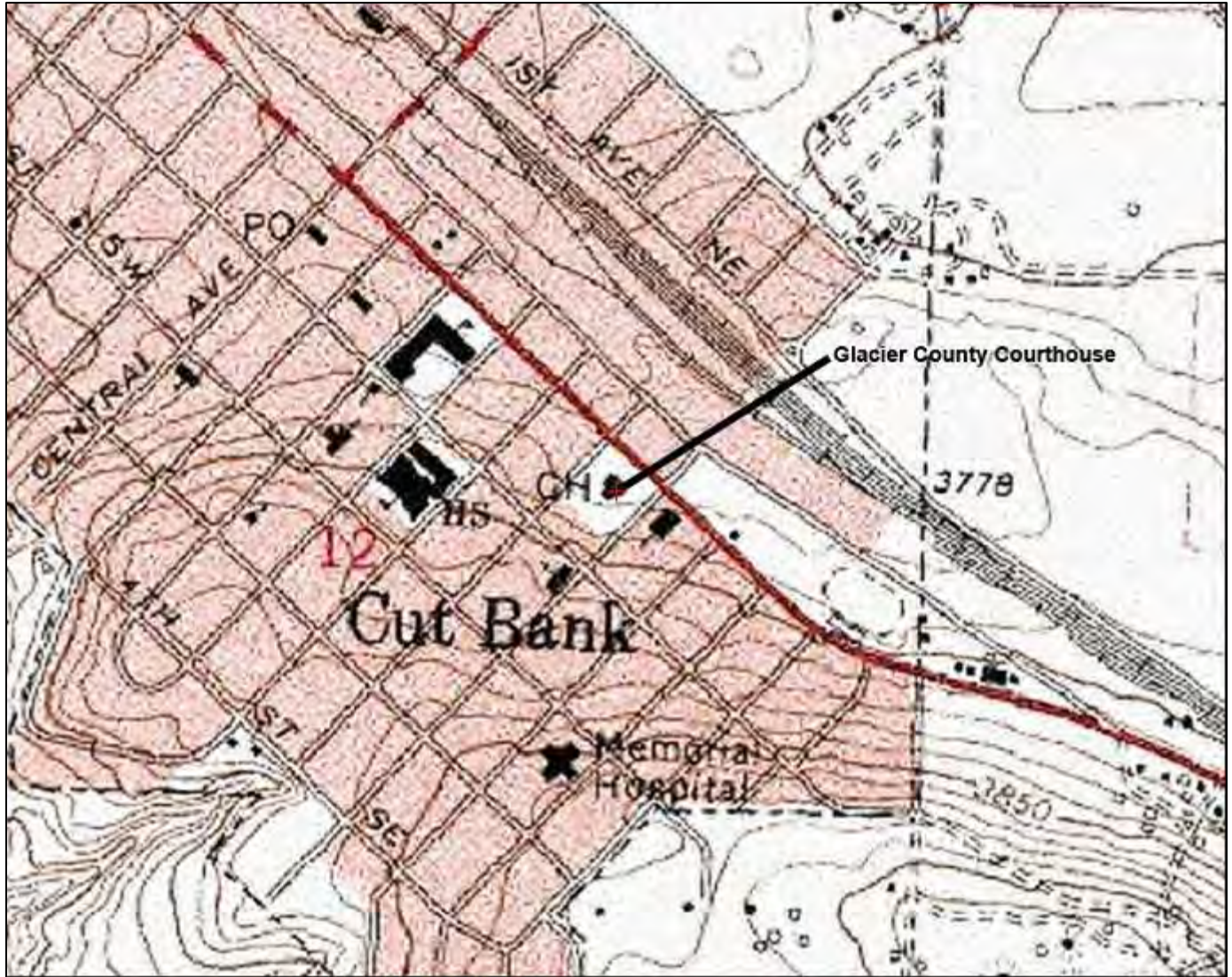
Estimated Burden Statement: Public reporting burden for this form is estimated to average 18 hours per response including time for reviewing instructions, gathering and maintaining data, and completing and reviewing the form. Direct comments regarding this burden estimate or any aspect of this form to the Office of Planning and Performance Management, U.S. Dept. of the Interior, 1849 C. Street, NW, Washington, DC.

United States Department of the Interior
National Park Service

Glacier County Courthouse
Name of Property
Glacier County, Montana
County and State
Name of multiple listing (if applicable)

National Register of Historic Places Continuation Sheet

Section number 10 Page 16



Location of the Glacier County Courthouse. Found on the 7.5' Cut Bank Quadrangle Map, 1966 (photoinspected 1980)

United States Department of the Interior
National Park Service

Glacier County Courthouse
Name of Property
Glacier County, Montana
County and State
Name of multiple listing (if applicable)

National Register of Historic Places Continuation Sheet

Section number 10 Page 17



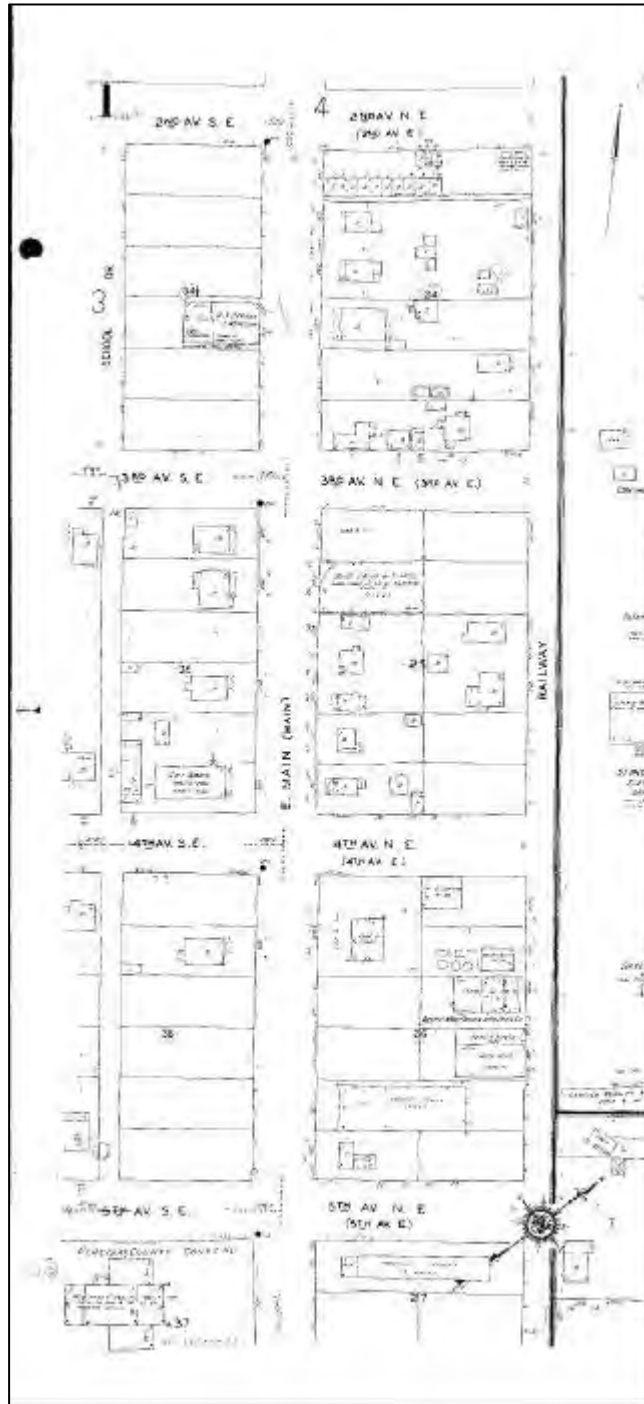
Cut Bank Aerial Photo/site map. Photo date: 2009

United States Department of the Interior
National Park Service

Glacier County Courthouse
Name of Property
Glacier County, Montana
County and State
Name of multiple listing (if applicable)

National Register of Historic Places Continuation Sheet

Section number 10 Page 18



Detail, Cut Bank Sanborn Map, July 1943, Sheet One

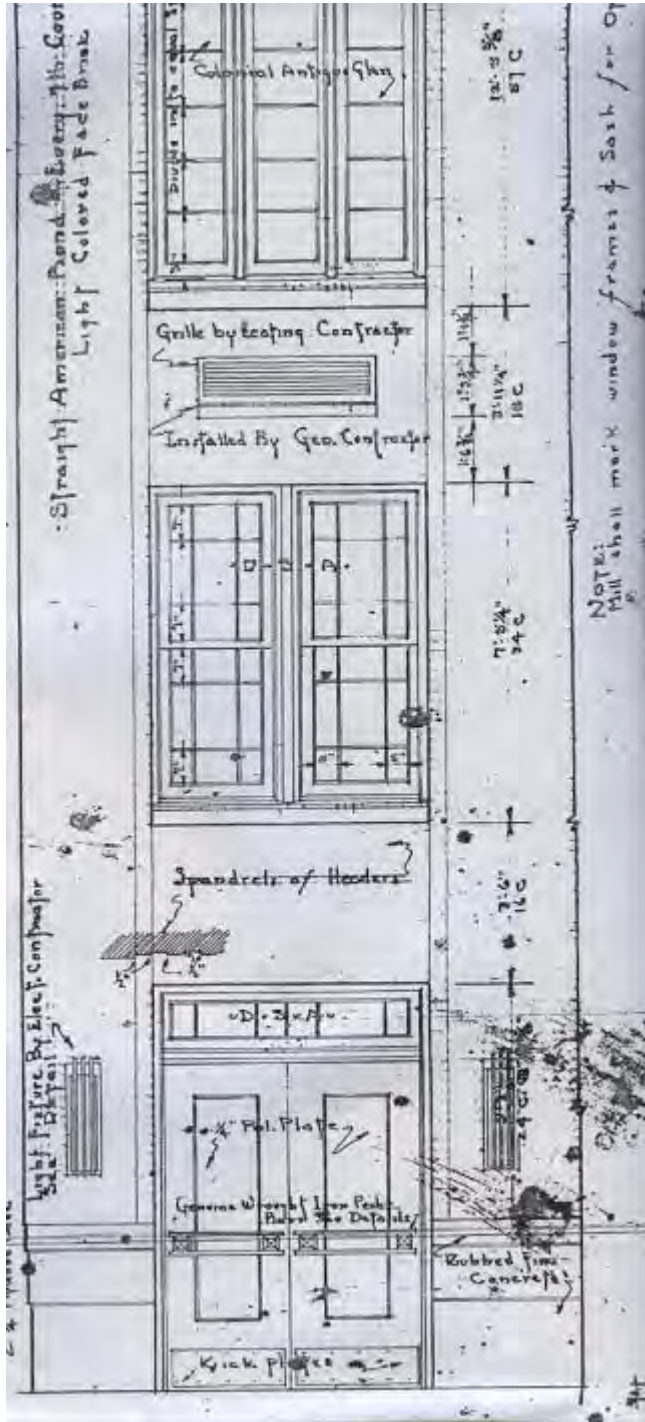
United States Department of the Interior
National Park Service

Glacier County Courthouse
Name of Property
Glacier County, Montana
County and State
Name of multiple listing (if applicable)

National Register of Historic Places Continuation Sheet

Section number Additional Documentation

Page 19



Detail of original courthouse entry plans. Original blueprints by Angus McIver. Blueprint scan courtesy of the Glacier County Historical Society.

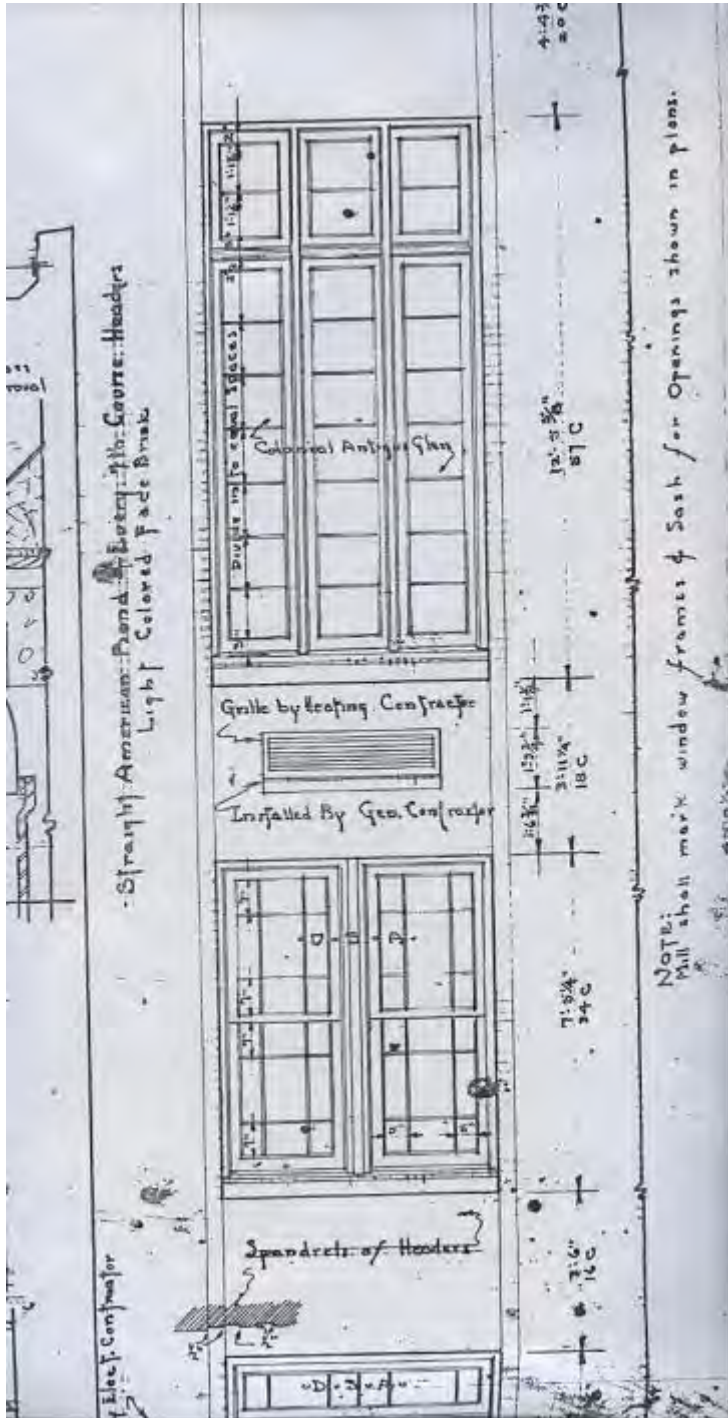
United States Department of the Interior
National Park Service

Glacier County Courthouse
Name of Property
Glacier County, Montana
County and State
Name of multiple listing (if applicable)

National Register of Historic Places Continuation Sheet

Section number Additional Documentation

Page 20



Detail of original courthouse window plans. Original blueprints by Angus McIver, 1938. Blueprint scan courtesy of the Glacier County Historical Society.

United States Department of the Interior
National Park Service

Glacier County Courthouse
Name of Property
Glacier County, Montana
County and State
Name of multiple listing (if applicable)

National Register of Historic Places Continuation Sheet

Section number Photographs Page 21

Historic Photographs



Glacier County Courthouse, circa 1945. North and east elevations, view to the southwest. Courtesy Glacier County Historical Society.

United States Department of the Interior
National Park Service

Glacier County Courthouse

Name of Property

Glacier County, Montana

County and State

Name of multiple listing (if applicable)

**National Register of Historic Places
Continuation Sheet**

Section number Photographs

Page 22



Glacier County Courthouse, circa 1945. North and east elevations detail, view to the southwest. Courtesy Glacier County Historical Society.

United States Department of the Interior
National Park Service

Glacier County Courthouse
Name of Property
Glacier County, Montana
County and State
Name of multiple listing (if applicable)

National Register of Historic Places Continuation Sheet

Section number Photographs Page 23

National Register Photolog

Name of Property: Glacier County Courthouse

City or Vicinity: Cut Bank

County: Glacier County State: Montana

Photographer: Kate Hampton

Date Photographed: May 2010

Location of Original Negative: N/A, Digital Photograph, Disk on file @ MT SHPO

Description of Photograph and View: Glacier County Courthouse, north elevation, view to the south.

Photograph No. 0001

Name of Property: Glacier County Courthouse

City or Vicinity: Cut Bank

County: Glacier County State: Montana

Photographer: Kate Hampton

Date Photographed: May 2010

Location of Original Negative: N/A, Digital Photograph, Disk on file @ MT SHPO

Description of Photograph and View: Glacier County Courthouse, east elevation, view to the west.

Photograph No. 0002

Name of Property: Glacier County Courthouse

City or Vicinity: Cut Bank

County: Glacier County State: Montana

Photographer: Kate Hampton

Date Photographed: May 2010

Location of Original Negative: N/A, Digital Photograph, Disk on file @ MT SHPO

Description of Photograph and View: Glacier County Courthouse, east elevation and overview of detention center addition, view to the southwest.

Photograph No. 0003

Name of Property: Glacier County Courthouse

City or Vicinity: Cut Bank

County: Glacier County State: Montana

Photographer: Kate Hampton

Date Photographed: May 2010

Location of Original Negative: N/A, Digital Photograph, Disk on file @ MT SHPO

Description of Photograph and View: Glacier County Courthouse, west elevation, view to the east.

Photograph No. 0004

Name of Property: Glacier County Courthouse

City or Vicinity: Cut Bank

County: Glacier County State: Montana

Photographer: Kate Hampton

Date Photographed: May 2010

Location of Original Negative: N/A, Digital Photograph, Disk on file @ MT SHPO

Description of Photograph and View: Glacier County Courthouse, south elevation of historic courthouse and west elevation of detention center, view to the northwest.

Photograph No. 0005

**United States Department of the Interior
National Park Service**

Glacier County Courthouse
Name of Property
Glacier County, Montana
County and State
Name of multiple listing (if applicable)

**National Register of Historic Places
Continuation Sheet**

Section number Photographs Page 24

Name of Property: Glacier County Courthouse
City or Vicinity: Cut Bank
County: Glacier County State: Montana
Photographer: Kate Hampton
Date Photographed: May 2010
Location of Original Negative: N/A, Digital Photograph, Disk on file @ MT SHPO
Description of Photograph and View: Glacier County Courthouse, east and southeast elevations of detention center addition, view to the northwest.
Photograph No. 0006

Name of Property: Glacier County Courthouse
City or Vicinity: Cut Bank
County: Glacier County State: Montana
Photographer: Kate Hampton
Date Photographed: May 2010
Location of Original Negative: N/A, Digital Photograph, Disk on file @ MT SHPO
Description of Photograph and View: Glacier County Courthouse, south elevation of detention center addition, view to the west.
Photograph No. 0007

Name of Property: Glacier County Courthouse
City or Vicinity: Cut Bank
County: Glacier County State: Montana
Photographer: Kate Hampton
Date Photographed: May 2010
Location of Original Negative: N/A, Digital Photograph, Disk on file @ MT SHPO
Description of Photograph and View: Glacier County Courthouse, north side, west elevation, detention center addition, view to the east-northeast.
Photograph No. 0008

Name of Property: Glacier County Courthouse
City or Vicinity: Cut Bank
County: Glacier County State: Montana
Photographer: Kate Hampton
Date Photographed: May 2010
Location of Original Negative: N/A, Digital Photograph, Disk on file @ MT SHPO
Description of Photograph and View: Glacier County Courthouse, east and north elevations of detention center addition, view to the south-southwest.
Photograph No. 0009

Name of Property: Glacier County Courthouse
City or Vicinity: Cut Bank
County: Glacier County State: Montana
Photographer: Kate Hampton
Date Photographed: May 2010
Location of Original Negative: N/A, Digital Photograph, Disk on file @ MT SHPO
Description of Photograph and View: Glacier County Courthouse, detail of north elevation, view to south.
Photograph No. 0010

**United States Department of the Interior
National Park Service**

Glacier County Courthouse
Name of Property
Glacier County, Montana
County and State
Name of multiple listing (if applicable)

**National Register of Historic Places
Continuation Sheet**

Section number Photographs Page 25

Name of Property: Glacier County Courthouse

City or Vicinity: Cut Bank

County: Glacier County State: Montana

Photographer: Kate Hampton

Date Photographed: May 2010

Location of Original Negative: N/A, Digital Photograph, Disk on file @ MT SHPO

Description of Photograph and View: Glacier County Courthouse, north elevation door detail, view to south.

Photograph No. 0011

Name of Property: Glacier County Courthouse

City or Vicinity: Cut Bank

County: Glacier County State: Montana

Photographer: Kate Hampton

Date Photographed: May 2010

Location of Original Negative: N/A, Digital Photograph, Disk on file @ MT SHPO

Description of Photograph and View: Glacier County Courthouse, east elevation second story window detail, view to the west.

Photograph No. 0012

Name of Property: Glacier County Courthouse

City or Vicinity: Cut Bank

County: Glacier County State: Montana

Photographer: Kate Hampton

Date Photographed: May 2010

Location of Original Negative: N/A, Digital Photograph, Disk on file @ MT SHPO

Description of Photograph and View: Glacier County Courthouse, interior of courtroom, view to the north.

Photograph No. 0013

Name of Property: Glacier County Courthouse

City or Vicinity: Cut Bank

County: Glacier County State: Montana

Photographer: Kate Hampton

Date Photographed: May 2010

Location of Original Negative: N/A, Digital Photograph, Disk on file @ MT SHPO

Description of Photograph and View: Glacier County Courthouse, interior of courtroom, view to the south.

Photograph No. 0014

Name of Property: Glacier County Courthouse

City or Vicinity: Cut Bank

County: Glacier County State: Montana

Photographer: Kate Hampton

Date Photographed: May 2010

Location of Original Negative: N/A, Digital Photograph, Disk on file @ MT SHPO

Description of Photograph and View: Glacier County Courthouse, interior detail of first floor corridor, view to the west.

Photograph No. 0015

**United States Department of the Interior
National Park Service**

Glacier County Courthouse
Name of Property
Glacier County, Montana
County and State
Name of multiple listing (if applicable)

**National Register of Historic Places
Continuation Sheet**

Section number Photographs Page 26

Name of Property: Glacier County Courthouse
City or Vicinity: Cut Bank
County: Glacier County State: Montana
Photographer: Kate Hampton
Date Photographed: May 2010
Location of Original Negative: N/A, Digital Photograph, Disk on file @ MT SHPO
Description of Photograph and View: Glacier County Courthouse, interior detail of second floor corridor, view to the east.
Photograph No. 0016

Name of Property: Glacier County Courthouse
City or Vicinity: Cut Bank
County: Glacier County State: Montana
Photographer: Kate Hampton
Date Photographed: May 2010
Location of Original Negative: N/A, Digital Photograph, Disk on file @ MT SHPO
Description of Photograph and View: Glacier County Courthouse, interior detail of first floor entry doors, view to the southwest.
Photograph No. 0017

Name of Property: Glacier County Courthouse
City or Vicinity: Cut Bank
County: Glacier County State: Montana
Photographer: Kate Hampton
Date Photographed: May 2010
Location of Original Negative: N/A, Digital Photograph, Disk on file @ MT SHPO
Description of Photograph and View: Glacier County Courthouse, interior detail of first floor railing, view to the southeast.
Photograph No. 0018

Name of Property: Glacier County Courthouse
City or Vicinity: Cut Bank
County: Glacier County State: Montana
Photographer: Kate Hampton
Date Photographed: May 2010
Location of Original Negative: N/A, Digital Photograph, Disk on file @ MT SHPO
Description of Photograph and View: Glacier County Courthouse, interior detail of second floor office window, northeast side of building, view to the northwest.
Photograph No. 0019

Name of Property: Glacier County Courthouse
City or Vicinity: Cut Bank
County: Glacier County State: Montana
Photographer: Kate Hampton
Date Photographed: May 2010
Location of Original Negative: N/A, Digital Photograph, Disk on file @ MT SHPO
Description of Photograph and View: Glacier County Courthouse, interior detail of second floor mezzanine windows, view to the north.
Photograph No. 0020

**United States Department of the Interior
National Park Service**

Glacier County Courthouse
Name of Property
Glacier County, Montana
County and State
Name of multiple listing (if applicable)

**National Register of Historic Places
Continuation Sheet**

Section number Photographs Page 27

Name of Property: Glacier County Courthouse

City or Vicinity: Cut Bank

County: Glacier County State: Montana

Photographer: Kate Hampton

Date Photographed: May 2010

Location of Original Negative: N/A, Digital Photograph, Disk on file @ MT SHPO

Description of Photograph and View: Glacier County Courthouse, interior detail of second floor mezzanine window, view to the north.

Photograph No. 0021

Name of Property: Glacier County Courthouse

City or Vicinity: Cut Bank

County: Glacier County State: Montana

Photographer: Kate Hampton

Date Photographed: May 2010

Location of Original Negative: N/A, Digital Photograph, Disk on file @ MT SHPO

Description of Photograph and View: Glacier County Courthouse, interior of courtroom, detail of historic light fixture, view to the northeast.

Photograph No. 0022

Name of Property: Glacier County Courthouse

City or Vicinity: Cut Bank

County: Glacier County State: Montana

Photographer: Kate Hampton

Date Photographed: May 2010

Location of Original Negative: N/A, Digital Photograph, Disk on file @ MT SHPO

Description of Photograph and View: Glacier County Courthouse, north and west elevations of garage, view to the southeast.

Photograph No. 0023

United States Department of the Interior
National Park Service

Glacier County Courthouse

Name of Property

Glacier County, Montana

County and State

Name of multiple listing (if applicable)

National Register of Historic Places Continuation Sheet

Section number Photographs

Page 28

National Register Photolog

Name of Property: Glacier County Courthouse

City or Vicinity: Cut Bank

County: Glacier County State: Montana

Photographer: Kate Hampton

Date Photographed: May 2010

Location of Original Negative: N/A, Digital Photograph, Disk on file @ MT SHPO

Description of Photograph and View: Glacier County Courthouse, north elevation, view to the south.

Photograph No. 0001



United States Department of the Interior
National Park Service

Glacier County Courthouse

Name of Property

Glacier County, Montana

County and State

Name of multiple listing (if applicable)

**National Register of Historic Places
Continuation Sheet**

Section number Photographs

Page 29

Name of Property: Glacier County Courthouse

City or Vicinity: Cut Bank

County: Glacier County State: Montana

Photographer: Kate Hampton

Date Photographed: May 2010

Location of Original Negative: N/A, Digital Photograph, Disk on file @ MT SHPO

Description of Photograph and View: Glacier County Courthouse, east elevation, view to the west.

Photograph No. 0002



United States Department of the Interior
National Park Service

Glacier County Courthouse
Name of Property
Glacier County, Montana
County and State
Name of multiple listing (if applicable)

National Register of Historic Places Continuation Sheet

Section number Photographs Page 30

Name of Property: Glacier County Courthouse
 City or Vicinity: Cut Bank
 County: Glacier County State: Montana
 Photographer: Kate Hampton
 Date Photographed: May 2010
 Location of Original Negative: N/A, Digital Photograph, Disk on file @ MT SHPO
 Description of Photograph and View: Glacier County Courthouse, east elevation and overview of detention center addition, view to the southwest.
 Photograph No. 0003



United States Department of the Interior
National Park Service

Glacier County Courthouse
Name of Property
Glacier County, Montana
County and State
Name of multiple listing (if applicable)

National Register of Historic Places Continuation Sheet

Section number Photographs Page 31

Name of Property: Glacier County Courthouse
 City or Vicinity: Cut Bank
 County: Glacier County State: Montana
 Photographer: Kate Hampton
 Date Photographed: May 2010
 Location of Original Negative: N/A, Digital Photograph, Disk on file @ MT SHPO
 Description of Photograph and View: Glacier County Courthouse, west elevation, view to the east.
 Photograph No. 0004



United States Department of the Interior
National Park Service

Glacier County Courthouse
Name of Property
Glacier County, Montana
County and State
Name of multiple listing (if applicable)

National Register of Historic Places Continuation Sheet

Section number Photographs Page 32

Name of Property: Glacier County Courthouse
 City or Vicinity: Cut Bank
 County: Glacier County State: Montana
 Photographer: Kate Hampton
 Date Photographed: May 2010
 Location of Original Negative: N/A, Digital Photograph, Disk on file @ MT SHPO
 Description of Photograph and View: Glacier County Courthouse, south elevation of historic courthouse and west elevation of detention center, view to the northwest.
 Photograph No. 0005



United States Department of the Interior
National Park Service

Glacier County Courthouse
Name of Property
Glacier County, Montana
County and State
Name of multiple listing (if applicable)

National Register of Historic Places Continuation Sheet

Section number Photographs Page 33

Name of Property: Glacier County Courthouse
 City or Vicinity: Cut Bank
 County: Glacier County State: Montana
 Photographer: Kate Hampton
 Date Photographed: May 2010
 Location of Original Negative: N/A, Digital Photograph, Disk on file @ MT SHPO
 Description of Photograph and View: Glacier County Courthouse, east and southeast elevations of detention center addition, view to the northwest.
 Photograph No. 0006



United States Department of the Interior
National Park Service

Glacier County Courthouse
Name of Property
Glacier County, Montana
County and State
Name of multiple listing (if applicable)

National Register of Historic Places Continuation Sheet

Section number Photographs Page 34

Name of Property: Glacier County Courthouse
 City or Vicinity: Cut Bank
 County: Glacier County State: Montana
 Photographer: Kate Hampton
 Date Photographed: May 2010
 Location of Original Negative: N/A, Digital Photograph, Disk on file @ MT SHPO
 Description of Photograph and View: Glacier County Courthouse, south elevation of detention center addition, view to the west.
 Photograph No. 0007



United States Department of the Interior
National Park Service

Glacier County Courthouse
Name of Property
Glacier County, Montana
County and State
Name of multiple listing (if applicable)

National Register of Historic Places Continuation Sheet

Section number Photographs Page 35

Name of Property: Glacier County Courthouse
 City or Vicinity: Cut Bank
 County: Glacier County State: Montana
 Photographer: Kate Hampton
 Date Photographed: May 2010
 Location of Original Negative: N/A, Digital Photograph, Disk on file @ MT SHPO
 Description of Photograph and View: Glacier County Courthouse, north side, west elevation, detention center addition, view to the east-northeast.
 Photograph No. 0008



United States Department of the Interior
National Park Service

Glacier County Courthouse
Name of Property
Glacier County, Montana
County and State
Name of multiple listing (if applicable)

National Register of Historic Places Continuation Sheet

Section number Photographs Page 36

Name of Property: Glacier County Courthouse
 City or Vicinity: Cut Bank
 County: Glacier County State: Montana
 Photographer: Kate Hampton
 Date Photographed: May 2010
 Location of Original Negative: N/A, Digital Photograph, Disk on file @ MT SHPO
 Description of Photograph and View: Glacier County Courthouse, east and north elevations of detention center addition, view to the south-southwest.
 Photograph No. 0009



United States Department of the Interior
National Park Service

Glacier County Courthouse

Name of Property

Glacier County, Montana

County and State

Name of multiple listing (if applicable)

National Register of Historic Places Continuation Sheet

Section number Photographs

Page 37

Name of Property: Glacier County Courthouse

City or Vicinity: Cut Bank

County: Glacier County State: Montana

Photographer: Kate Hampton

Date Photographed: May 2010

Location of Original Negative: N/A, Digital Photograph, Disk on file @ MT SHPO

Description of Photograph and View: Glacier County Courthouse, detail of north elevation, view to south.

Photograph No. 0010



United States Department of the Interior
National Park Service

Glacier County Courthouse
Name of Property
Glacier County, Montana
County and State
Name of multiple listing (if applicable)

National Register of Historic Places Continuation Sheet

Section number Photographs Page 38

Name of Property: Glacier County Courthouse
 City or Vicinity: Cut Bank
 County: Glacier County State: Montana
 Photographer: Kate Hampton
 Date Photographed: May 2010
 Location of Original Negative: N/A, Digital Photograph, Disk on file @ MT SHPO
 Description of Photograph and View: Glacier County Courthouse, north elevation door detail, view to south.
 Photograph No. 0011



United States Department of the Interior
National Park Service

Glacier County Courthouse
Name of Property
Glacier County, Montana
County and State
Name of multiple listing (if applicable)

National Register of Historic Places Continuation Sheet

Section number Photographs Page 39

Name of Property: Glacier County Courthouse
 City or Vicinity: Cut Bank
 County: Glacier County State: Montana
 Photographer: Kate Hampton
 Date Photographed: May 2010
 Location of Original Negative: N/A, Digital Photograph, Disk on file @ MT SHPO
 Description of Photograph and View: Glacier County Courthouse, east elevation second story window detail, view to the west.
 Photograph No. 0012



United States Department of the Interior
National Park Service

Glacier County Courthouse

Name of Property

Glacier County, Montana

County and State

Name of multiple listing (if applicable)

National Register of Historic Places Continuation Sheet

Section number Photographs

Page 40

Name of Property: Glacier County Courthouse

City or Vicinity: Cut Bank

County: Glacier County State: Montana

Photographer: Kate Hampton

Date Photographed: May 2010

Location of Original Negative: N/A, Digital Photograph, Disk on file @ MT SHPO

Description of Photograph and View: Glacier County Courthouse, interior of courtroom, view to the north.

Photograph No. 0013



United States Department of the Interior
National Park Service

Glacier County Courthouse
Name of Property
Glacier County, Montana
County and State
Name of multiple listing (if applicable)

National Register of Historic Places Continuation Sheet

Section number Photographs Page 41

Name of Property: Glacier County Courthouse
 City or Vicinity: Cut Bank
 County: Glacier County State: Montana
 Photographer: Kate Hampton
 Date Photographed: May 2010
 Location of Original Negative: N/A, Digital Photograph, Disk on file @ MT SHPO
 Description of Photograph and View: Glacier County Courthouse, interior of courtroom, view to the south.
 Photograph No. 0014



United States Department of the Interior
National Park Service

Glacier County Courthouse

Name of Property

Glacier County, Montana

County and State

Name of multiple listing (if applicable)

National Register of Historic Places Continuation Sheet

Section number Photographs

Page 42

Name of Property: Glacier County Courthouse

City or Vicinity: Cut Bank

County: Glacier County State: Montana

Photographer: Kate Hampton

Date Photographed: May 2010

Location of Original Negative: N/A, Digital Photograph, Disk on file @ MT SHPO

Description of Photograph and View: Glacier County Courthouse, interior detail of first floor corridor, view to the west.

Photograph No. 0015



United States Department of the Interior
National Park Service

Glacier County Courthouse

Name of Property

Glacier County, Montana

County and State

Name of multiple listing (if applicable)

National Register of Historic Places Continuation Sheet

Section number Photographs

Page 43

Name of Property: Glacier County Courthouse

City or Vicinity: Cut Bank

County: Glacier County State: Montana

Photographer: Kate Hampton

Date Photographed: May 2010

Location of Original Negative: N/A, Digital Photograph, Disk on file @ MT SHPO

Description of Photograph and View: Glacier County Courthouse, interior detail of second floor corridor, view to the east.
Photograph No. 0016



United States Department of the Interior
National Park Service

Glacier County Courthouse
Name of Property
Glacier County, Montana
County and State
Name of multiple listing (if applicable)

National Register of Historic Places Continuation Sheet

Section number Photographs Page 44

Name of Property: Glacier County Courthouse
 City or Vicinity: Cut Bank
 County: Glacier County State: Montana
 Photographer: Kate Hampton
 Date Photographed: May 2010
 Location of Original Negative: N/A, Digital Photograph, Disk on file @ MT SHPO
 Description of Photograph and View: Glacier County Courthouse, interior detail of first floor entry doors, view to the southwest.
 Photograph No. 0017



United States Department of the Interior
National Park Service

Glacier County Courthouse
Name of Property
Glacier County, Montana
County and State
Name of multiple listing (if applicable)

National Register of Historic Places Continuation Sheet

Section number Photographs Page 45

Name of Property: Glacier County Courthouse
 City or Vicinity: Cut Bank
 County: Glacier County State: Montana
 Photographer: Kate Hampton
 Date Photographed: May 2010
 Location of Original Negative: N/A, Digital Photograph, Disk on file @ MT SHPO
 Description of Photograph and View: Glacier County Courthouse, interior detail of first floor railing, view to the southeast.
 Photograph No. 0018



United States Department of the Interior
National Park Service

Glacier County Courthouse
Name of Property
Glacier County, Montana
County and State
Name of multiple listing (if applicable)

National Register of Historic Places Continuation Sheet

Section number Photographs

Page 46

Name of Property: Glacier County Courthouse
 City or Vicinity: Cut Bank
 County: Glacier County State: Montana
 Photographer: Kate Hampton
 Date Photographed: May 2010
 Location of Original Negative: N/A, Digital Photograph, Disk on file @ MT SHPO
 Description of Photograph and View: Glacier County Courthouse, interior detail of second floor office window, northeast side of building, view to the northwest.
 Photograph No. 0019



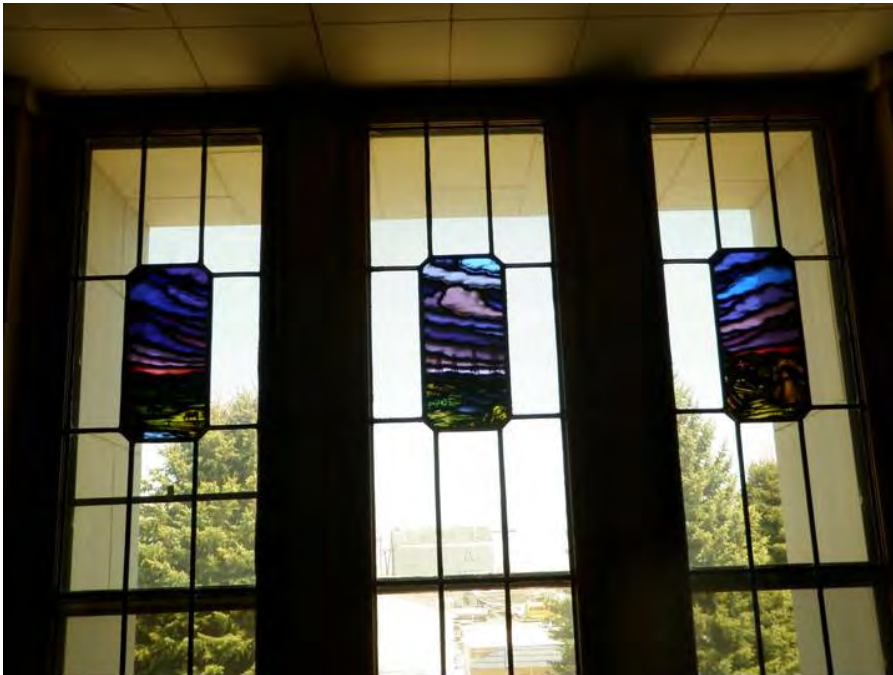
United States Department of the Interior
National Park Service

Glacier County Courthouse
Name of Property
Glacier County, Montana
County and State
Name of multiple listing (if applicable)

National Register of Historic Places Continuation Sheet

Section number Photographs Page 47

Name of Property: Glacier County Courthouse
 City or Vicinity: Cut Bank
 County: Glacier County State: Montana
 Photographer: Kate Hampton
 Date Photographed: May 2010
 Location of Original Negative: N/A, Digital Photograph, Disk on file @ MT SHPO
 Description of Photograph and View: Glacier County Courthouse, interior detail of second floor mezzanine windows, view to the north.
 Photograph No. 0020



United States Department of the Interior
National Park Service

Glacier County Courthouse
Name of Property
Glacier County, Montana
County and State
Name of multiple listing (if applicable)

National Register of Historic Places Continuation Sheet

Section number Photographs Page 48

Name of Property: Glacier County Courthouse
 City or Vicinity: Cut Bank
 County: Glacier County State: Montana
 Photographer: Kate Hampton
 Date Photographed: May 2010
 Location of Original Negative: N/A, Digital Photograph, Disk on file @ MT SHPO
 Description of Photograph and View: Glacier County Courthouse, interior detail of second floor mezzanine window, view to the north.
 Photograph No. 0021



United States Department of the Interior
National Park Service

Glacier County Courthouse
Name of Property
Glacier County, Montana
County and State
Name of multiple listing (if applicable)

National Register of Historic Places Continuation Sheet

Section number Photographs Page 49

Name of Property: Glacier County Courthouse
 City or Vicinity: Cut Bank
 County: Glacier County State: Montana
 Photographer: Kate Hampton
 Date Photographed: May 2010
 Location of Original Negative: N/A, Digital Photograph, Disk on file @ MT SHPO
 Description of Photograph and View: Glacier County Courthouse, interior of courtroom, detail of historic light fixture, view to the northeast.
 Photograph No. 0022



United States Department of the Interior
National Park Service

Glacier County Courthouse

Name of Property

Glacier County, Montana

County and State

Name of multiple listing (if applicable)

National Register of Historic Places Continuation Sheet

Section number Photographs

Page 50

Name of Property: Glacier County Courthouse

City or Vicinity: Cut Bank

County: Glacier County State: Montana

Photographer: Kate Hampton

Date Photographed: May 2010

Location of Original Negative: N/A, Digital Photograph, Disk on file @ MT SHPO

Description of Photograph and View: Glacier County Courthouse, north and west elevations of garage, view to the southeast.

Photograph No. 0023

